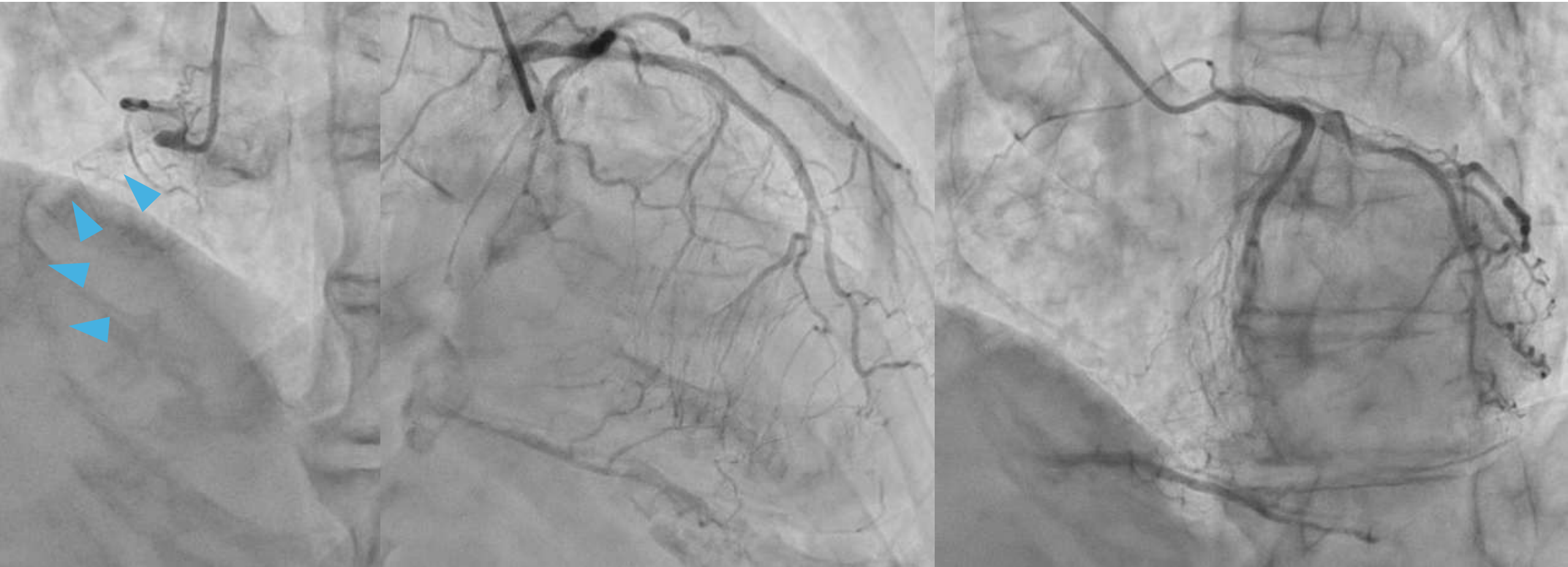
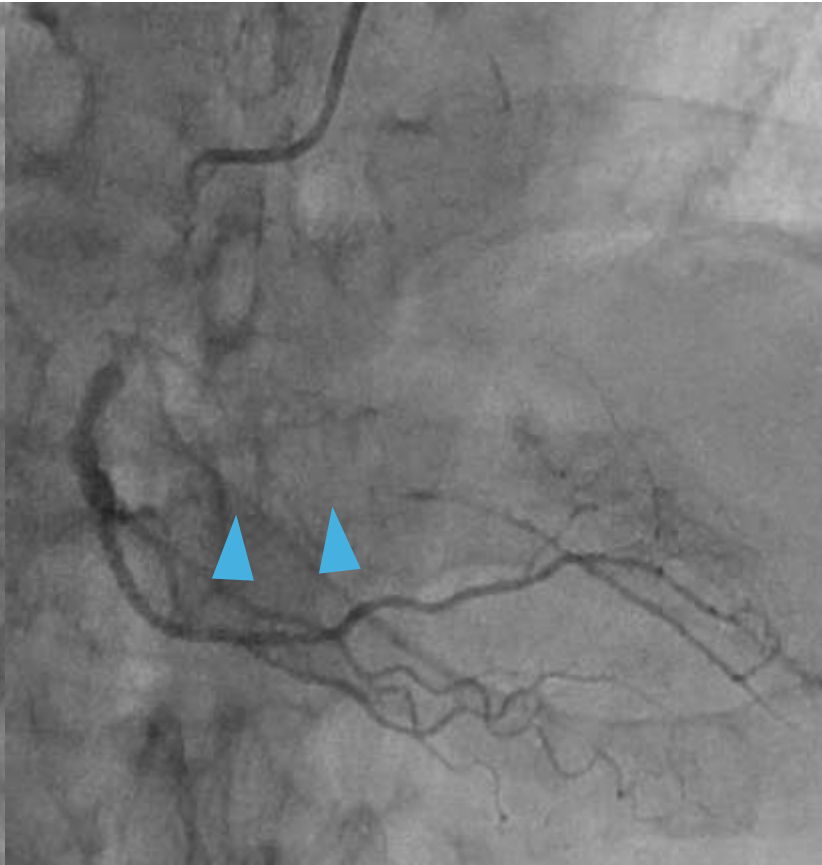


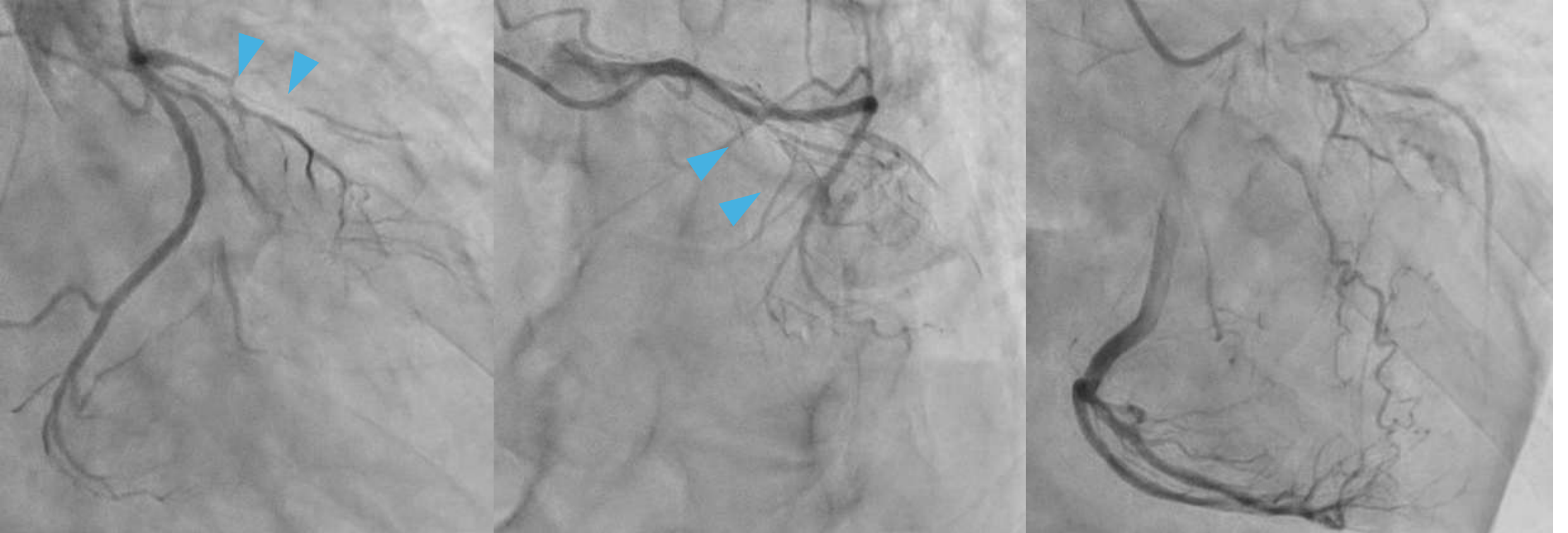
Case: RCA proximal CTO, RCA os STENT+, septal channel+



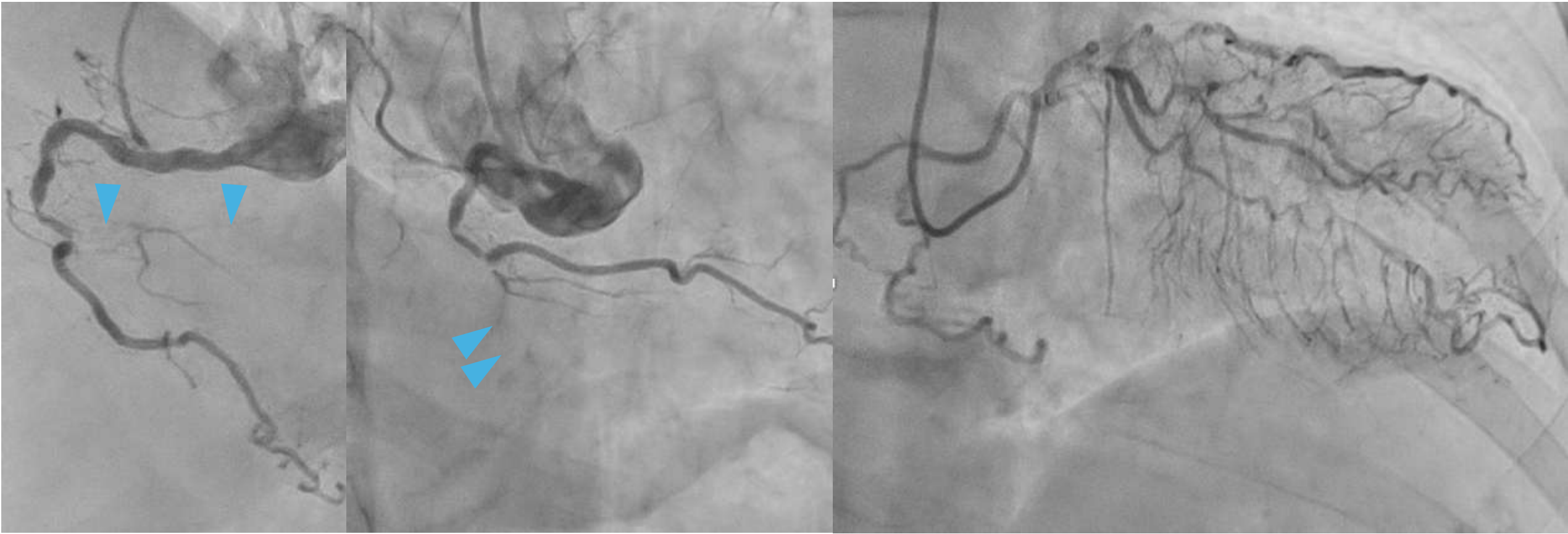
Case: RCA distal CTO, ipsilateral channel+, AC channel+



Case: LAD proximal CTO, entry unclear, septal channel+

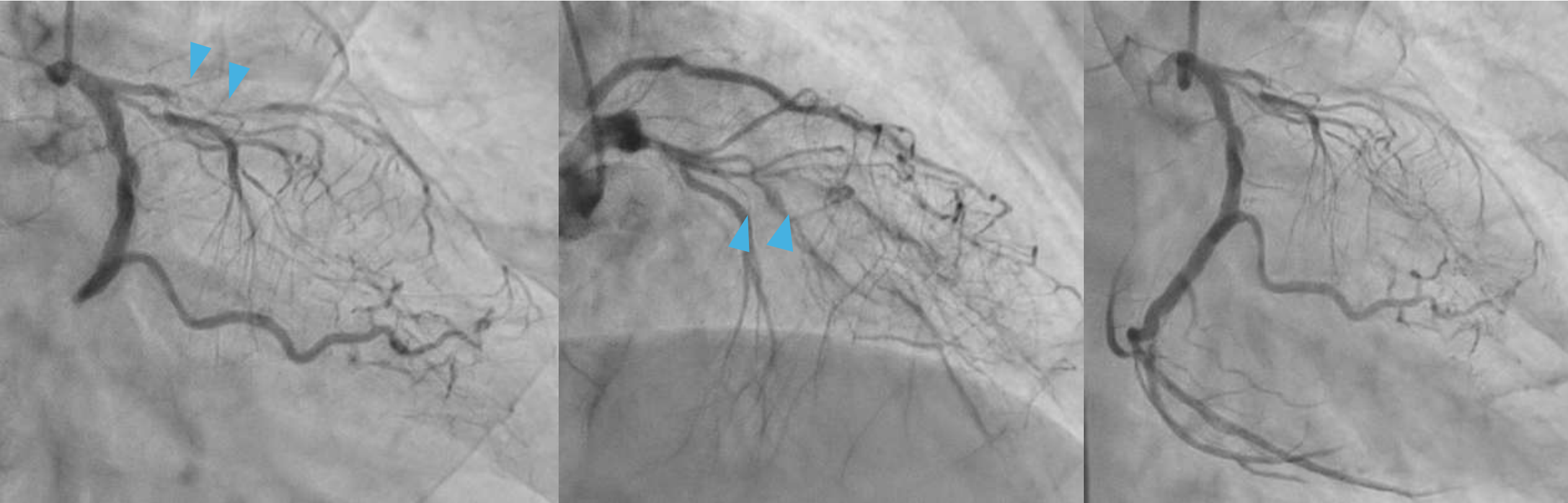


Case: RCA distal CTO, AC channel+





Case: LAD proximal CTO, entry unclear, single coronary artery, collateral from PL



Case: RCA distal CTO, AC channel+

